

AREA #1

THE GATES ARE AT 5208 AD 971. A BERM IS AT 440. ALL OF THE TRAILS ARE LISTED AS : CLASS 4 - PARTIAL CLOSURE - TYPE ALLOWED IS ALL. THIS IS ONE WE DISCUSSED POSSIBLY OPENING OR MOVING THE CLOSURE INTO THE MIDDLE. THE CIRCLED AREA IS WET, BUT EASILY BYPASSED ON ATV. THE REST OF THESE TRAILS ARE GOOD.

TRAILS AFFECTED ARE: 5208, 4245, 930, 439, 4105, 5206, 5213, 4154, 5213, 440, 5211, 4247, 4248, 441, AND 971.

AREA #2

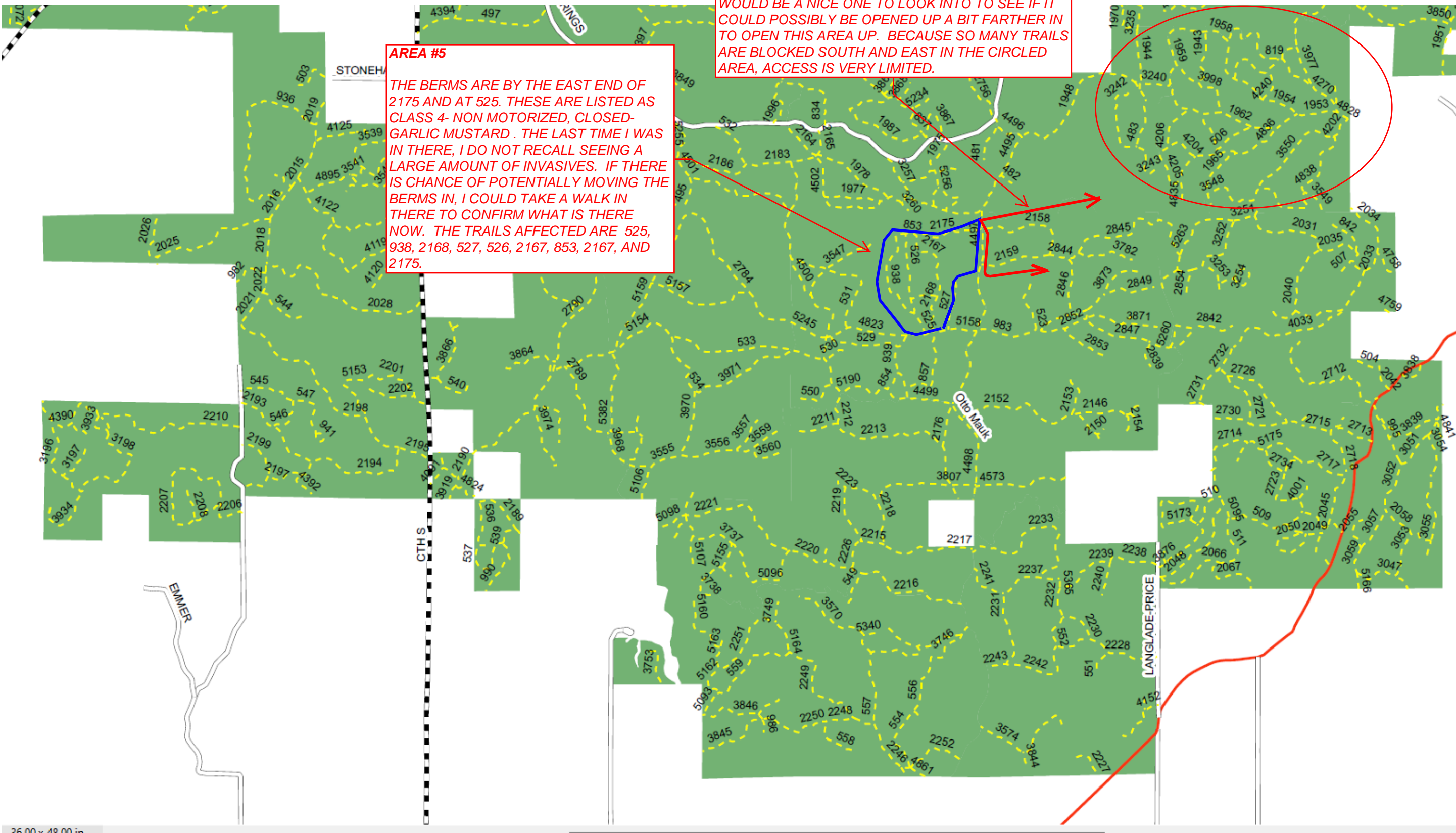
THE GATE IS AT THE ATV TRAIL AND 1914. THIS CAN BE ACCESSED FROM THE EAST. ALL OF THE TRAILS LISTED ARE CLASS 4 - PARTIAL CLOSURE- TYPE ALLOWED IS ALL. THESE TRAILS ARE IN VERY GOOD CONDITION. TRAILS AFFECTED ARE 812, 1904, 1914, 456, 811.

AREA #3

THE GATES ARE AT 5235 AND 490. 837 IS A STONE BERM. THESE ARE LISTED AS CLOSED- NON MOTORIZED, ROAD PROTECTION/INVASIVES. I CAN NOT REALLY REMEMBER SEEING INVASIVES IN THERE PRIOR TO THE LOGGING, AND WAS IN THERE AFTER AND DO NOT RECALL SEEING IT EITHER. MIGHT THIS BE POSSIBLE TO REVIEW AND SEE IF THE CLOSURE CAN BE MOVED IN FARTHER? TRAILS AFFECTED ARE 1987, 837, 3867, 3869, 489, 490, 488, 835, 838, AND 5235. 3868 AND 5234 ARE TEMP AS LISTED AND REALLY CAN BE DROVE.

AREA 4

THE GATES ARE AT 2768 AND 2009 BY THE PIT ON CTH S. THERE IS A WET AREA TOWARDS THE PIT ON 2007 AND MAYBE 2008. COULD IT BE POSSIBLE TO CHANGE THE CLOSURE TO WHERE 2766 AND 2008 INTERSECT? THE TRAIL IS VERY GOOD AND I CAN NOT REMEMBER SEEING INVASIVES. THESE ARE LISTED AS CLASS 4 - NON MOTORIZED, CLOSED, INVASVES / SOFT SURFACE.



AREA #5

THE BERMS ARE BY THE EAST END OF 2175 AND AT 525. THESE ARE LISTED AS CLASS 4- NON MOTORIZED, CLOSED-GARLIC MUSTARD . THE LAST TIME I WAS IN THERE, I DO NOT RECALL SEEING A LARGE AMOUNT OF INVASIVES. IF THERE IS CHANCE OF POTENTIALLY MOVING THE BERMS IN, I COULD TAKE A WALK IN THERE TO CONFIRM WHAT IS THERE NOW. THE TRAILS AFFECTED ARE 525, 938, 2168, 527, 526, 2167, 853, 2167, AND 2175.

AREA #6

THERE IS CABLE ON 2158 AND A GATE AT 2159. WHEN LOOKING BEHIND THESE CLOSURES, THERE ARE MANY DIFFERENT CLASSIFICATIONS FROM CLOSED. TOP PARTIAL CLOSURE, TO OPEN. THIS WOULD BE A NICE ONE TO LOOK INTO TO SEE IF IT COULD POSSIBLY BE OPENED UP A BIT FARTHER IN TO OPEN THIS AREA UP. BECAUSE SO MANY TRAILS ARE BLOCKED SOUTH AND EAST IN THE CIRCLED AREA, ACCESS IS VERY LIMITED.